

1. ALL CEILING HEIGHTS ARE FROM THE TOP OF FINISH FLOOR TO UNDERSIDE OF FINISH CEILING.
2. PROVIDE ADEQUATE CLEARANCES FOR FIXTURES, DUCTS, CEILINGS AND RELATED PERTINENT ITEMS NECESSARY TO MAINTAIN THE SPECIFIED HEIGHTS ABOVE FINISH FLOOR.
3. ADDITIONAL HANGER AND SAFETY WIRES FOR LIGHT FIXTURES, SPEAKERS AND DUCTWORK, AS REQUIRED BY LOCAL CODES, TO BE THE RESPONSIBILITY OF THE CEILING SUBCONTRACTOR.
4. SPRINKLER HEAD LAYOUT TO CONFORM TO LOCAL CODE, TAKING IN ACCOUNT LOCATIONS OF DUCTWORK, LIGHTING AND LOCATION OF TENANT'S CABINET, FIXTURE AND SHELVING UNITS.
5. PAINT EXPOSED ROOF STRUCTURE/DECK, DUCTWORK, CONDUIT, J-BOXES, SPRINKLER PIPING, LIGHT FIXTURE HANGERS, ETC. REFER TO FINISH SCHEDULE.
6. ARCHITECTURAL DRAWINGS DETERMINE LOCATION OF LUMINAIRES AND SUPERSEDE ALL OTHERS, U.N.O.
7. AFTER INSTALLATION, ELECTRICAL CONTRACTOR IS TO TILT THE LAMP IN ALL "T" FIXTURES @ A 45 DEGREE ANGLE TOWARD WALL OR CABINETS.
8. SEE LIGHT FIXTURE SCHEDULE ON ELECTRICAL DRAWINGS FOR FIXTURE MODEL NUMBERS KEYED TO THE LIGHTING AND CEILING LEGEND.

## REF. CEILING NOTES

N.T.S.

M

- RECESSED DOWNLIGHT
- RECESSED ACCENT LIGHT
- PENDANT LIGHT
- CHANDELIER, BOTTOM OF FIXTURE AT 7'-4" A.F.F.
- SURFACE IN-SOFTIT MOUNTED FLUORESCENT
- TRACK WITH TRACK HEADS (SURFACE / PENDANT)
- FLUORESCENT STRIPS (CHAIN HUNG)
- FLUORESCENT STRIPS (SURFACE MOUNTED)
- SURFACE MOUNTED OR SUSPENDED FLUORESCENT
- SPEAKER: WALL MOUNTED - SEE VENDOR SHOP DRAWINGS
- SUBWOOFER: SEE VENDOR SHOP DRAWINGS
- SUBWOOFER: 3DL SD-210 DUAL 10" SUB COLOR: BLACK SECURED TO STRUCTURE ABOVE WITH BRACKET (LIGHTING/CEILING) WHEN OPEN TO STRUCTURE
- SECURITY CAMERA BY VENDOR
- SUPPLY DIFFUSER
- RETURN AIR GRILLE
- ACCESS PANEL
- EXHAUST FAN
- TRAFFIC COUNTER
- EXIT SIGN: SALES AREA
- EXIT SIGN: NON-SALES AREA
- EMERGENCY LIGHT: SALES AREA
- CONCEALED EMERGENCY LIGHT: SALES AREA
- EMERGENCY LIGHT: SALES & NON-SALES AREA
- SEMI-RECESSED EMERGENCY LIGHT: SALES AREA
- EXIT/EMERGENCY LIGHT: NON-SALES AREA
- 2' x 2' MARKETING GRID SYSTEM (STOREFRONT DISPLAY)
- PENDANT SPRINKLER HEAD
- CONCEALED SPRINKLER HEAD
- SEMI-RECESSED PENDANT SPRINKLER HEAD
- UPRIGHT SPRINKLER HEAD
- (E) MALL LIGHT FIXTURE (N.T.C.)

NOTE:  
ALL ITEMS SHOWN IN LEGEND MAY NOT BE USED IN PLAN.

## CEILING LEGEND

N.T.S.

L

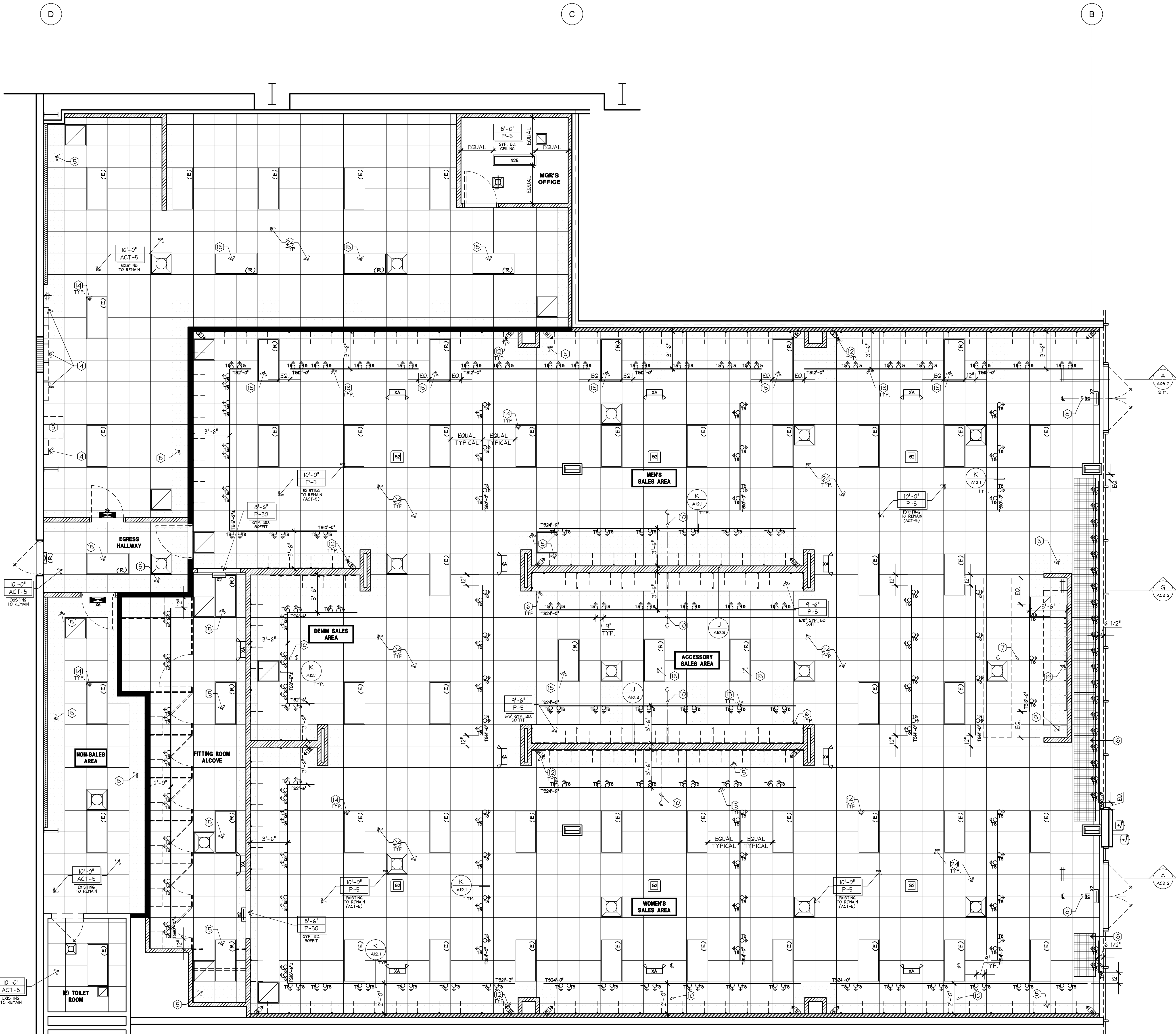
1. STOREFRONT ILLUMINATED SIGNAGE
2. TOP OF EMERGENCY LIGHTS AND EXIT SIGNS TO BE MOUNTED IN LINE WITH BOTTOM OF TRACK. COORDINATE LOCATIONS WITH LOCAL INSPECTOR
3. MUSIC SYSTEM BELOW
4. ELECTRICAL PANELS BELOW
- (N) CEILING GRID TO MATCH HEIGHT & FINISH OF ADJACENT EXISTING CEILING GRID
6. ALIGN FACE OF SOFFIT WITH FACE OF WALL
7. 6" OF BACKWRAP/CASHWRAP & LIGHT TRACK
8. 6" OF EXIT SIGN, TRAFFIC COUNTER, AND ENTRY
9. 6" OF FLUORESCENT LIGHT, SPEAKERS, DIFFUSERS, LIGHT TRACK, ETC.
10. 6" OF TRACK & WALL STUDS/SHELVING BAY
11. 6" OF SUSPENDED 24" LIGHT FIXTURE, BOTTOM OF FIXTURE AT 12'-0" A.F.F.
12. G.C. TO COORDINATE SPEAKER LOCATION WITH OWNER'S VENDOR SHOP DRAWINGS TO MOUNT SPEAKER ON WALL, REFER TO M/A12.1 FOR ADDITIONAL BLOCKING REQUIREMENTS
13. SURFACE MOUNTED TRACK/TRACK HEADS MOUNTED TO CEILING GRID - SEE DETAIL K/A12.1
14. (E) LIGHT FIXTURES - G.C. TO ENSURE ALL ELEMENTS ARE IN PROPER WORKING CONDITIONS AND REPLACE/REPAIR AS NEEDED
15. (R) LIGHT FIXTURES G.C. TO REFURBISH AS REQUIRED
16. HATCHED AREA INDICATES HVAC MAINTENANCE PLATFORM ABOVE
17. (N) BLADE SIGN ABOVE, SEE STOREFRONT DRAWINGS
18. MARKETING RAIL - REFER TO STOREFRONT DRAWINGS (WHITE)
19. NON-ILLUMINATED WALL MOUNTED BACKWRAP SIGNAGE
20. START TILE
21. (N) ANNING ABOVE, SEE STOREFRONT DRAWINGS
22. CHECKPOINT SECURITY CONSOLE REFER TO VENDOR SHOP DRAWINGS, PAINT P-33
23. (E) ANNING TO REMAIN
24. G.C. TO REPLACE ANY MISSING OR DAMAGED CEILING TILE AS REQUIRED
25. (E) MALL LIGHT FIXTURE (N.T.C.)
26. (E) LANDLORD PARAPET ABOVE - REFER TO STOREFRONT ELEVATION

## R.C.P. KEYNOTES

N.T.S.

K

## REFLECTED CEILING PLAN



- ### LIGHT FIXTURE LEGEND:
- (E) - INDICATES EXISTING LIGHT FIXTURE
  - (R) - INDICATES RELOCATED LIGHT FIXTURE
  - (N) - INDICATES NEW LIGHT FIXTURE
- ### REFLECTED CEILING LEGEND:
- (E) - INDICATES NEW CEILING GRID TO MATCH EXISTING

# EXPRESS

**EXPRESS FASHION OPERATIONS, LLC**  
**d/b/a STORE DESIGN & CONSTRUCTION**  
1 Express Drive Columbus, Ohio 43230  
Telephone: 614.474.4001 · Express.com

1753

**PROJECT INFORMATION:**  
**EXPRESS**  
**TANGER OUTLET CENTER - BRANSON**  
300 TANGER BLVD.  
BRANSON, MO 65616  
NEW PACKAGE: DG  
1/52 J/E PROJECT #:  
OUTLET FALL 2014 140301

**REVISIONS:**  
REQUIRED BY: DATE:  
NOTED BY: DATE:

ELITE CONSTRUCTION GROUP  
LAKE JACKSON, TX  
PHONE: 979-285-0712  
NOTE: THESE PRINTS HAVE BEEN  
REDUCED BY 50 PERCENT. SCALE  
WILL BE 50 PERCENT OF WHAT IS  
NOTED ON PLANS.

SHREMSHOCK  
Shremshock Architects, Inc.  
610 S. Quarry Rd. Westerville, OH 43081  
T: 614.545.4550 F: 614.545.4551 shremshock.com  
Gerald S. Shremshock, Architect  
Timothy J. Shremshock, Architect

DATE ISSUED: 07/18/14  
DESIGNED BY: JJB  
DRAWN BY: JEB  
CHECKED BY: AEM/KMM

## REFLECTED CEILING PLAN

DRAWING NUMBER:  
**A03.1**

1/4" = 1'-0"

A